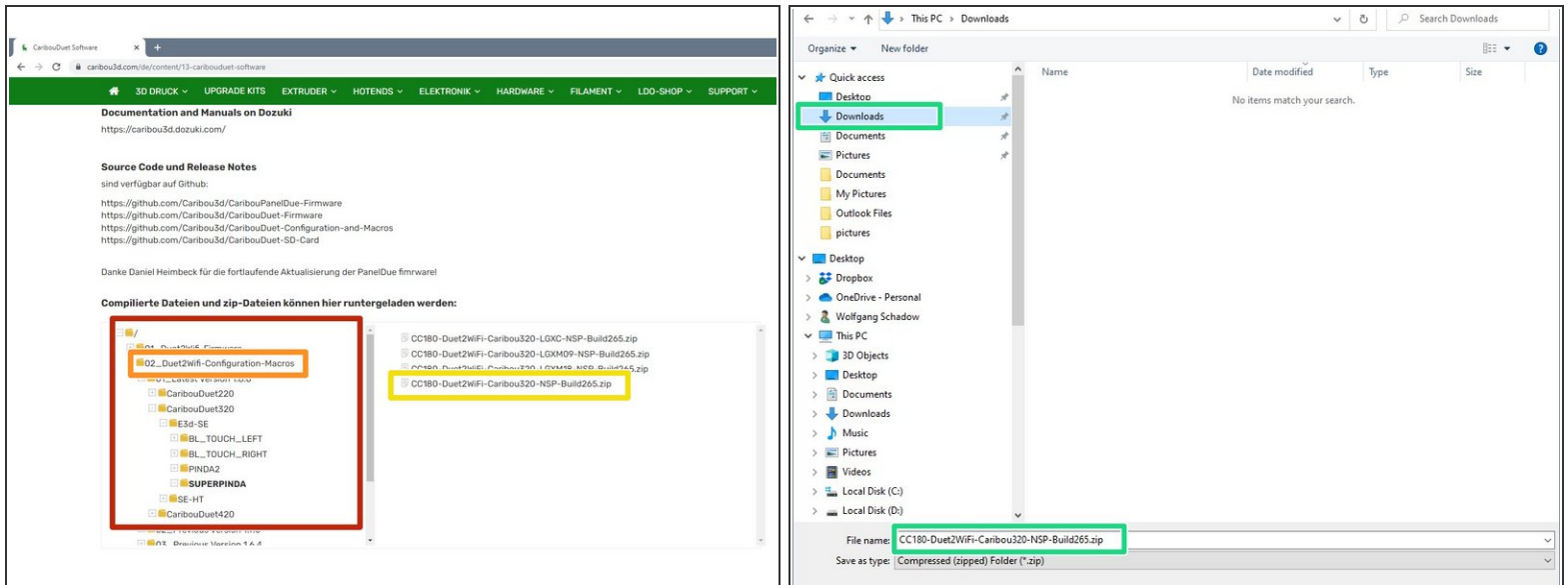


24. Initial setup of the Duet2Wifi and PanelDue

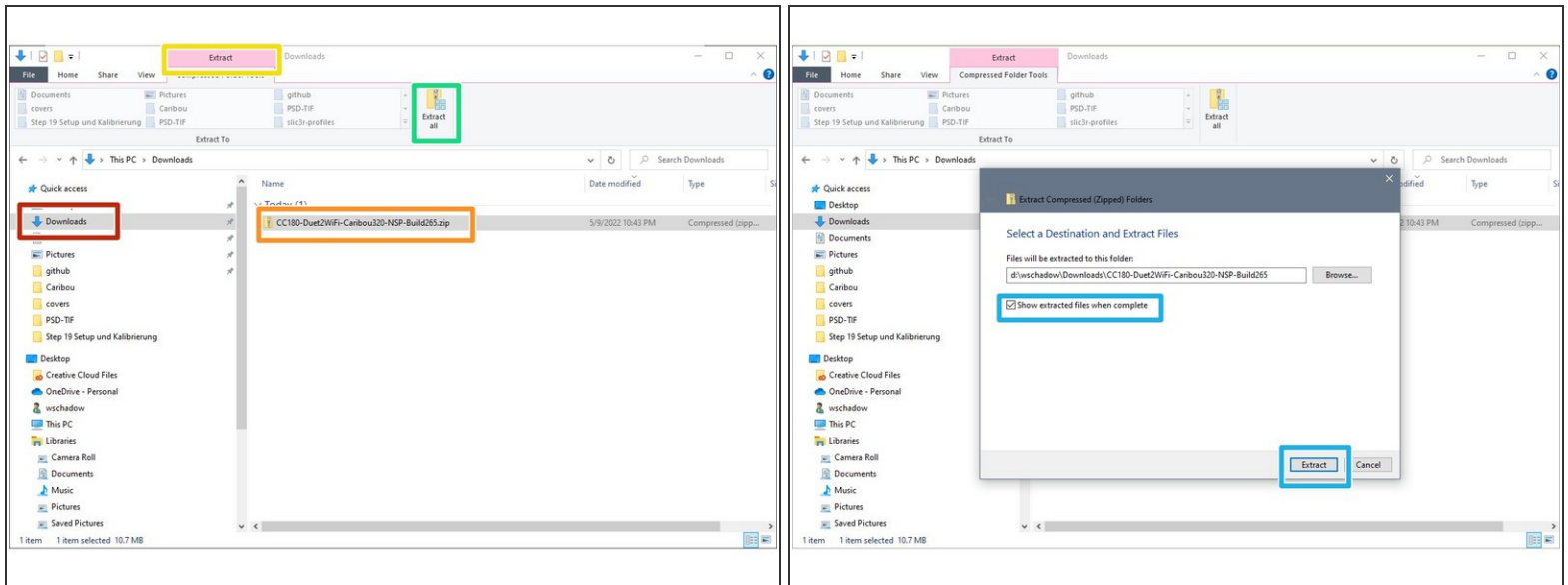
The screenshot shows the Caribou3D website with a green navigation bar. The main content area has a heading "Documentation and Manuals on Dozuki" with a link to <https://caribou3d.dozuki.com/>. Below this is a section "Source Code und Release Notes" with links to GitHub repositories for CaribouPanelDue-Firmware, CaribouDuet-Firmware, CaribouDuet-Configuration-and-Macros, and CaribouDuet-SD-Card. A note thanks Daniel Heimbeck for firmware updates. A section "Compilierte Dateien und zip-Dateien können hier heruntergeladen werden:" is followed by a file explorer view showing a directory structure with folders like "01_Duet2WiFi-Firmware", "02_Duet2WiFi-Configuration-Macros", and "03_Previous Version 1.6.4". A list of zip files is shown on the right, including "CC180-Duet2WiFi-Caribou320-LGXC-NSP-Build265.zip" and "CC180-Duet2WiFi-Caribou320-LGXM09-NSP-Build265.zip".

Step 1 — Download Software



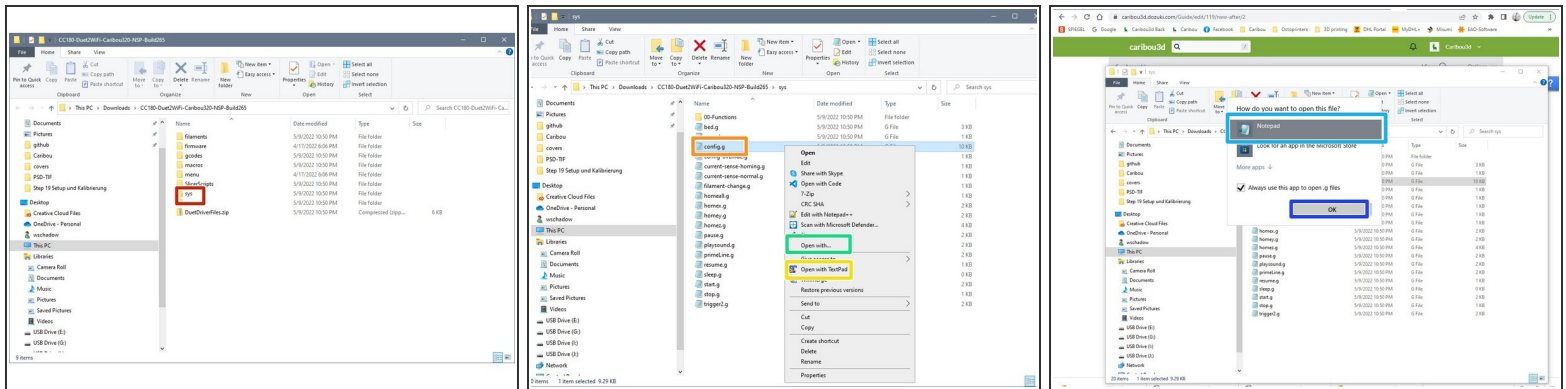
- Go to the [CaribouDuet Software page](#).
- In the File Manager of the page, click:
- 02_Duet2Wifi-Configuration-Macros
- Navigate through the directory tree to the correct software for your printer and download the .zip by clicking on it.
- Save the file in a directory of your choice.

Step 2 — Unpacking the files



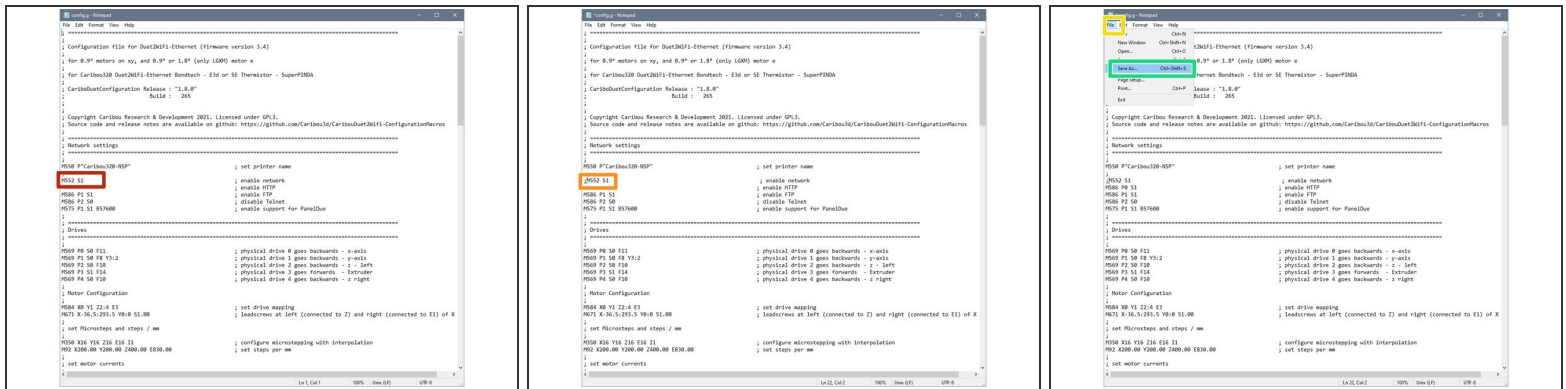
- Open a Windows Explorer and change to the directory where you downloaded the file.
- Click once on the file.
- An option to unzip will be displayed. Click on it once.
- Click Extract All.
- A window opens, in which a destination directory is displayed. This is a subdirectory of the current folder. When you click Extract, the files will be unzipped. Make sure that you check the box to display the unzipped files

Step 3 — Disable automatic network startup (1 / 2)



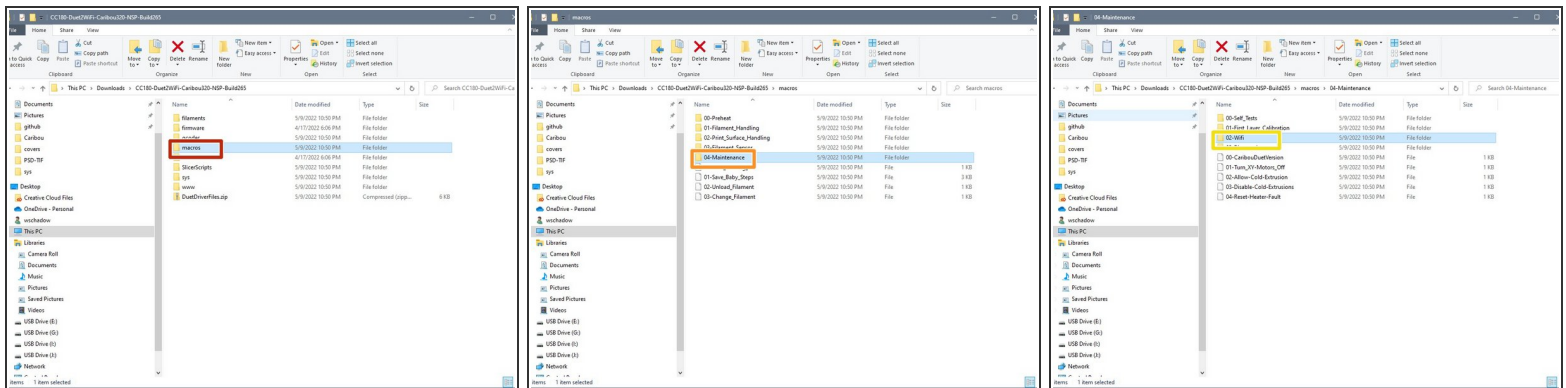
- Double click on **sys**.
- Right-click **config.g** and a list of options will be displayed.
- If you have a test program like **Notepad++** or **TextPad** installed, choose one of them to open the file.
- If you do not have such a program, just click **Open with**,
 - select **Notepad**,
 - and click **ok**.
- A new window will open and display the file.

Step 4 — Disable automatic network startup (2 / 2)



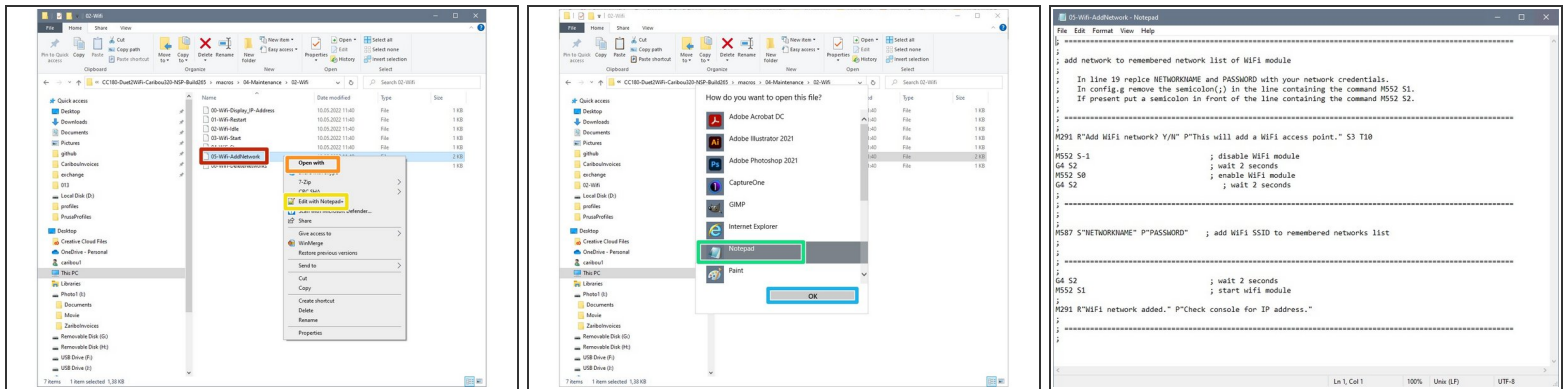
- Look for the line starting with the command **M552** (line 20-22 depending on the version).
- Place a semicolon (;) at the beginning of the line.
- With this change the command will not be executed.
- Click on **File**
- and click on **Save**.

Step 5 — Navigation to the WiFi macros



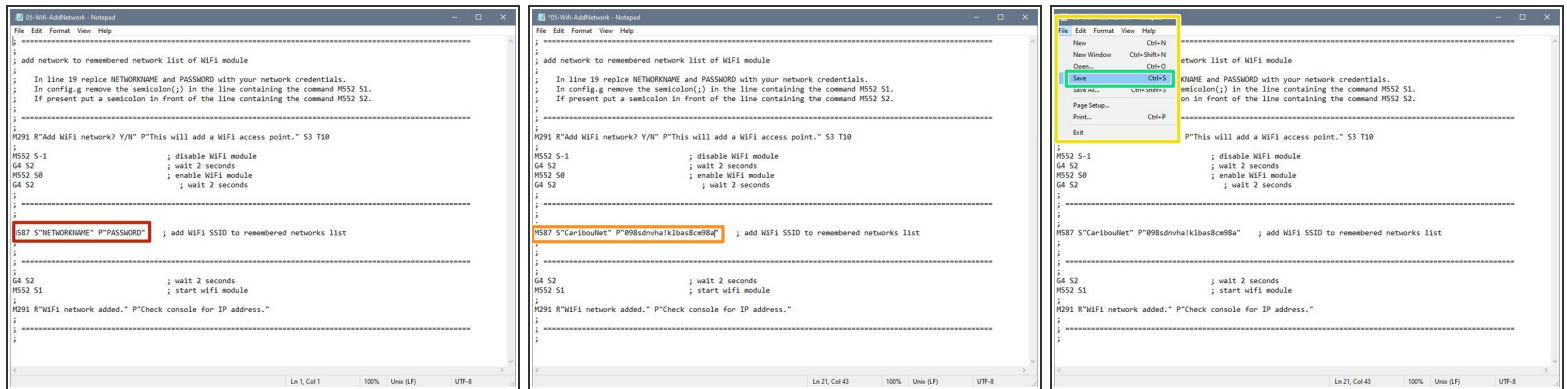
- Go back to the root directory in your Explorer and select **macros** with a double click.
- Change further to the directory **04-Maintenance**.
- and from there to **02-Wifi**.

Step 6 — Open the "Add Network" file



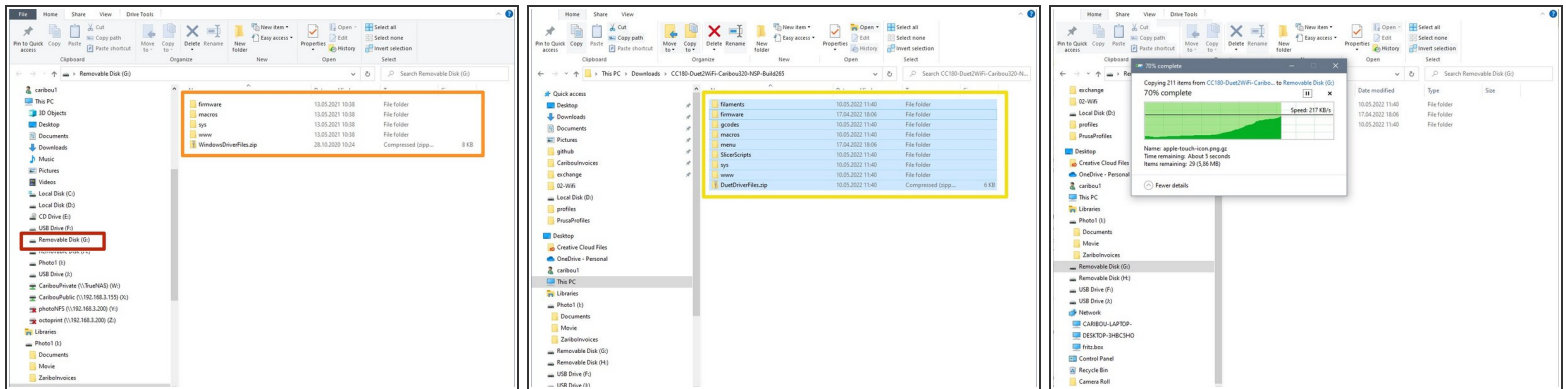
- Right click on **05-Wifi-AddNetwork** and a list of options will be displayed.
- If you have a test program like **Notepad++** or **TextPad** installed, choose one of them to open the file.
- If you do not have such a program, just click **Open with**,
- select **Notepad**,
- and click ok.
- A new window will open and display the file.

Step 7 — Enter network data



- Now you need to enter both the name of your WiFi network and the password. Do not change anything else. If you remove the quotation marks, make sure you insert double quotation marks by pressing the Shift 2 key on your keyboard.
- The new entry should look similar.
- Press **CTRL-S** or **STRG-S** on your keyboard or go to **File**,
- and select **Save**. You can now close this window.

Step 8 — Copy to the SD card



 Switch off the printer.

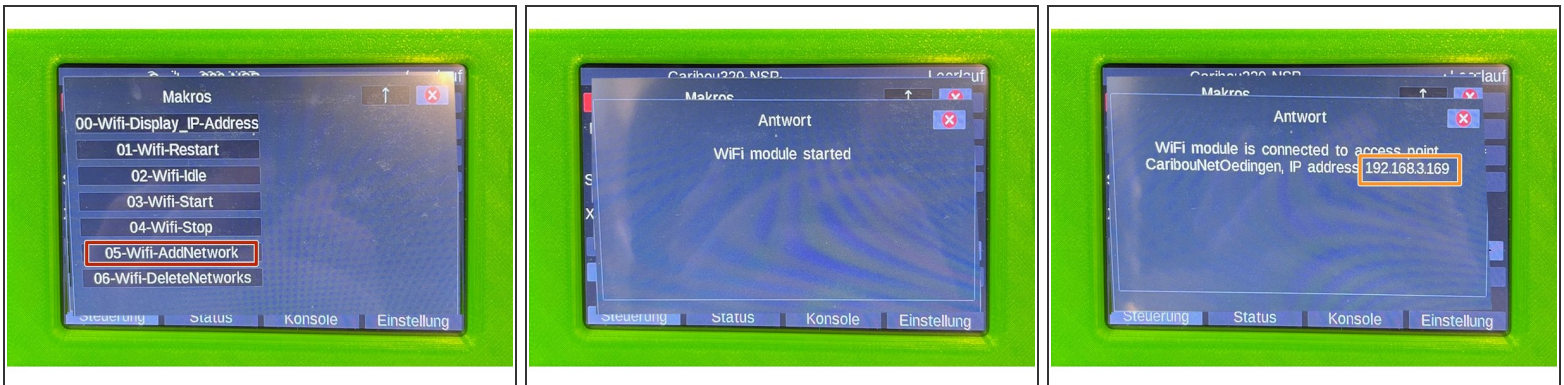
- Now remove the SD card from the Duet board in the DuetBox and insert it into your PC / laptop.
- A window opens, which displays the contents of the card.
- Delete all the files on the SD card.
- Now go back to the directory with the unzipped files and mark all files by pressing **STRG-A** or **CTRL-A**.
- Now press **STRG-C** or **CTRL-C** to copy.
- Switch back to the SD card and press **STRG-V** or **CTRL-V** to insert.
- After the copying process is finished, you can remove the card from the PC / laptop and put it back into the Duet board.

Step 9 — Navigation to the Network Macro



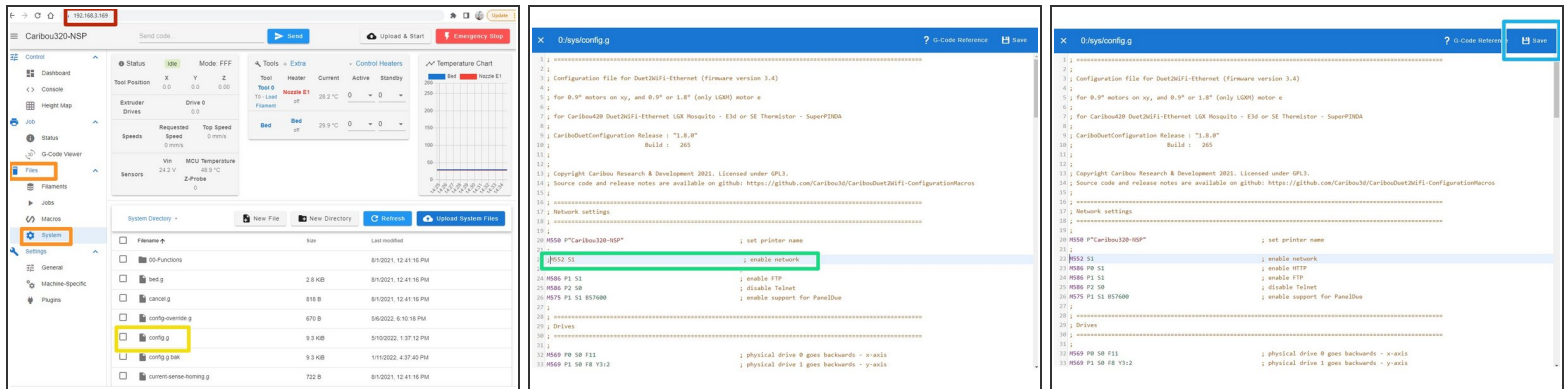
- Now switch on the printer and wait until the overview appears.
- Click **Macros**,
- from there to **04-Maintenance**
- and finally to **02-WiFi**.

Step 10 — Execute the Macro



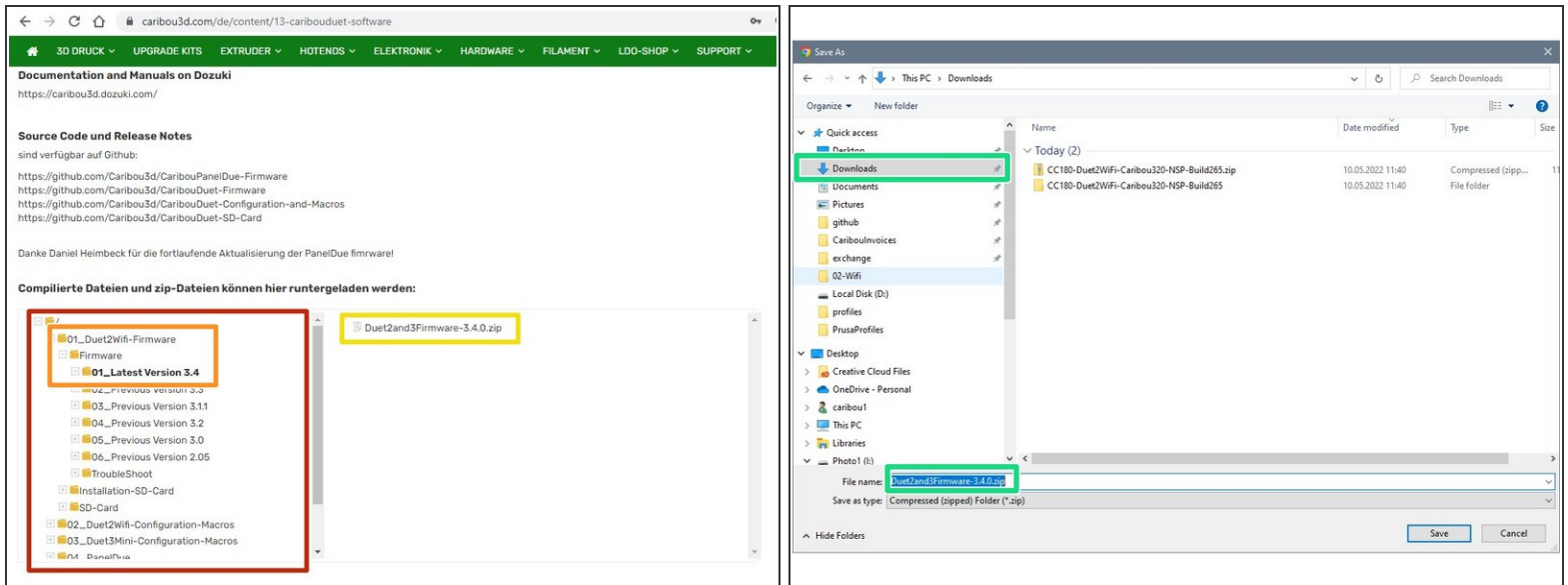
- Click on **05-WiFi-AddNetwork** and execute the macro with it.
- The Duet board will now try to connect to the network.
- In case of an error, check the network data you wrote into the macro.
- After a short time, the IP address is displayed. Make a note of the address.

Step 11 — Enable Automatic Network Startup



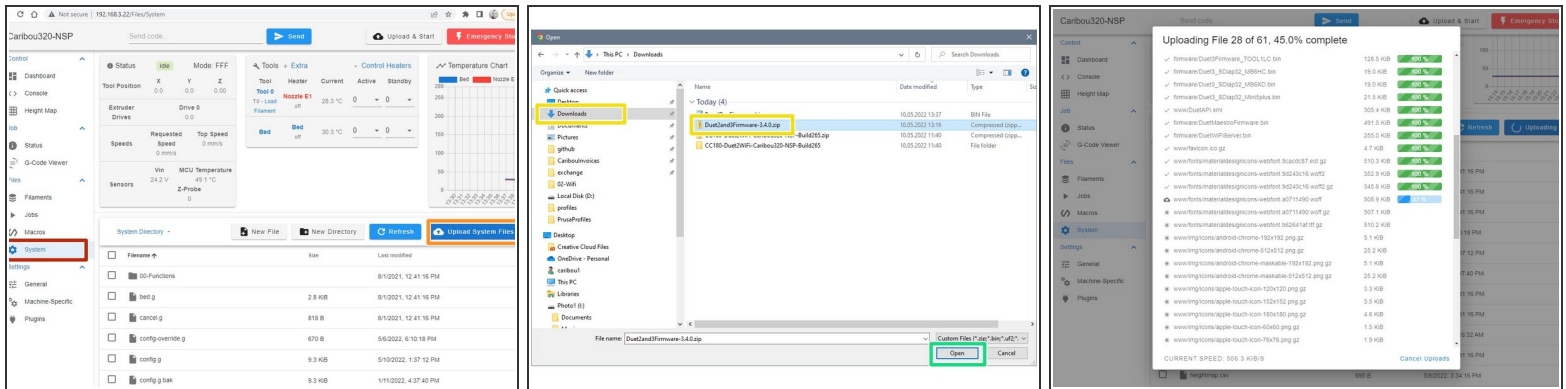
- Now enter the IP address in a web browser. This will give you access to the Duet board and you can control it, upload files, etc.
- In the menu on the left side go to **Files**, then to **System**.
- Click on config.g.
- Now remove the semicolon (;) (*was added in step 4*) before the M552 command.
- By clicking **Save** the file is saved.
- ❗ The board does **not** have to be restarted afterwards.
- ❗ The next two steps update the firmware of the DuetBoard and the PanelDue.

Step 12 — Download Duet firmware



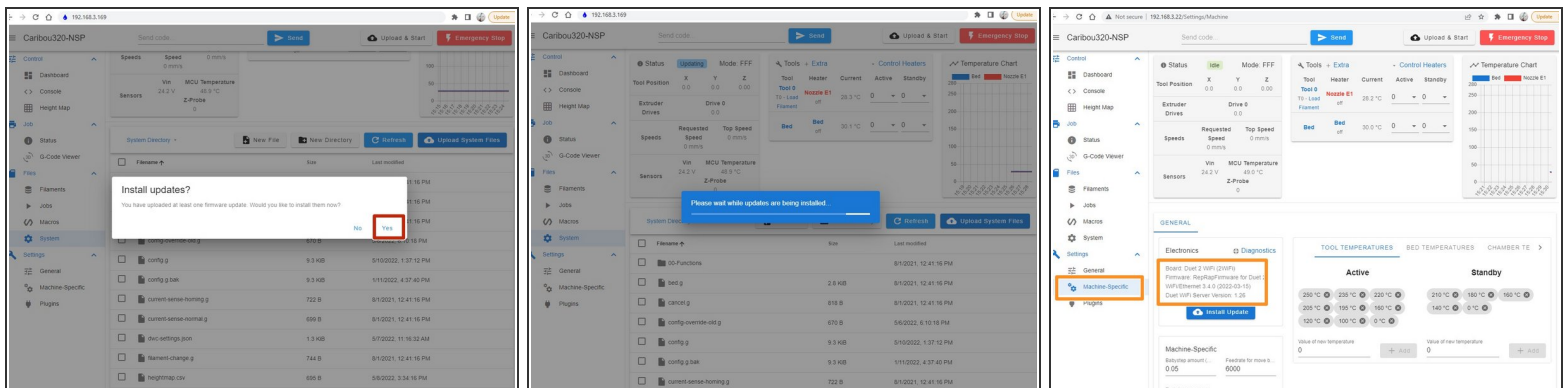
- Go to the [CaribouDuet Software page](#).
- In the File Manager of the page, click:
 - **01_Duet2Wifi-Firmware / Firmware / 01_Latest Version 3.4**
- ❗ The version number may differ when new firmware is released.
- Download the .zip file by clicking on it.
- Save the file in a directory of your choice.

Step 13 — Installing the Duet firmware (1 / 2)



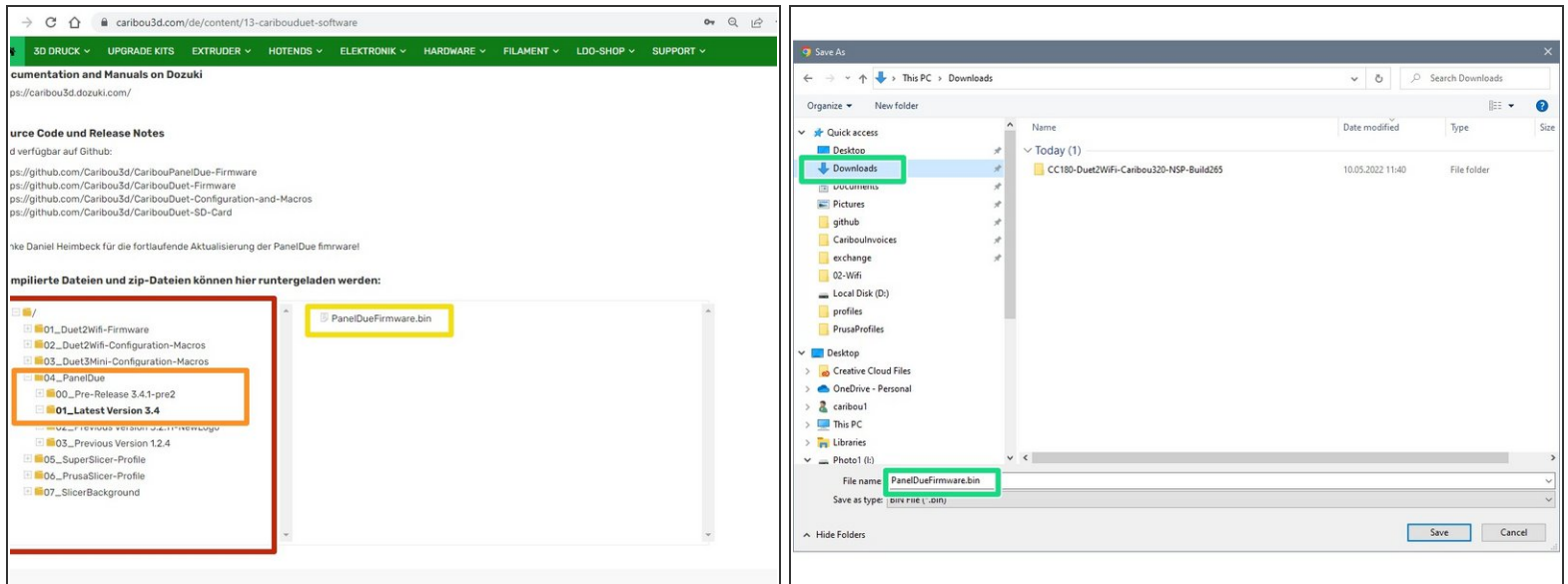
- In Duet WebControl, select **System**.
- Click there on **Upload System Files**.
- A window opens and you select the file **Duet2and3Firmware-x.x.x.zip** there.
- Click on **open**.
- The firmware will now be unpacked automatically.

Step 14 — Installing the Duet firmware (2 / 2)



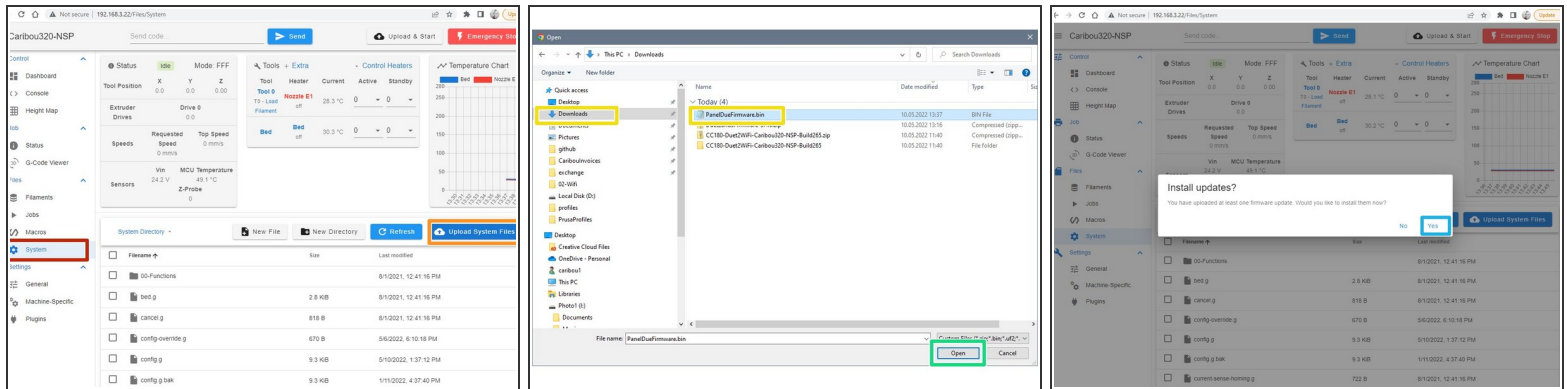
- A window will open, click **yes** there to start the installation.
- The firmware will now be installed. The process can take up to 60sec and in the meantime the connection is interrupted and automatically restored.
- Under **Machine-Specific** you can check the currently installed version.

Step 15 — Download PanelDue Firmware



- Go to the [CaribouDuet Software page](#).
- In the File Manager of the page, click:
 - **04_PanelDue / 01_Latest Version 3.4**
- ❗ The version number may differ when new firmware is released.
- Download the .bin file by clicking on it.
- Save the file in a directory of your choice.

Step 16 — Installing the PanelDue firmware



- In Duet WebControl, select **System**.
 - Click there on **Upload System Files**.
 - A window opens and you select the file **PanelDueFirmware.bin** there.
 - Click on **open**.
 - Select **yes** in the window that opens after the upload, .
 - The firmware will be installed now. The process takes about 45sec.
- ⚠ If you get an error message that access is not possible, take a thin stick and press the **Erase button** (small hole above the push button on the PanelDue Cover) briefly once.