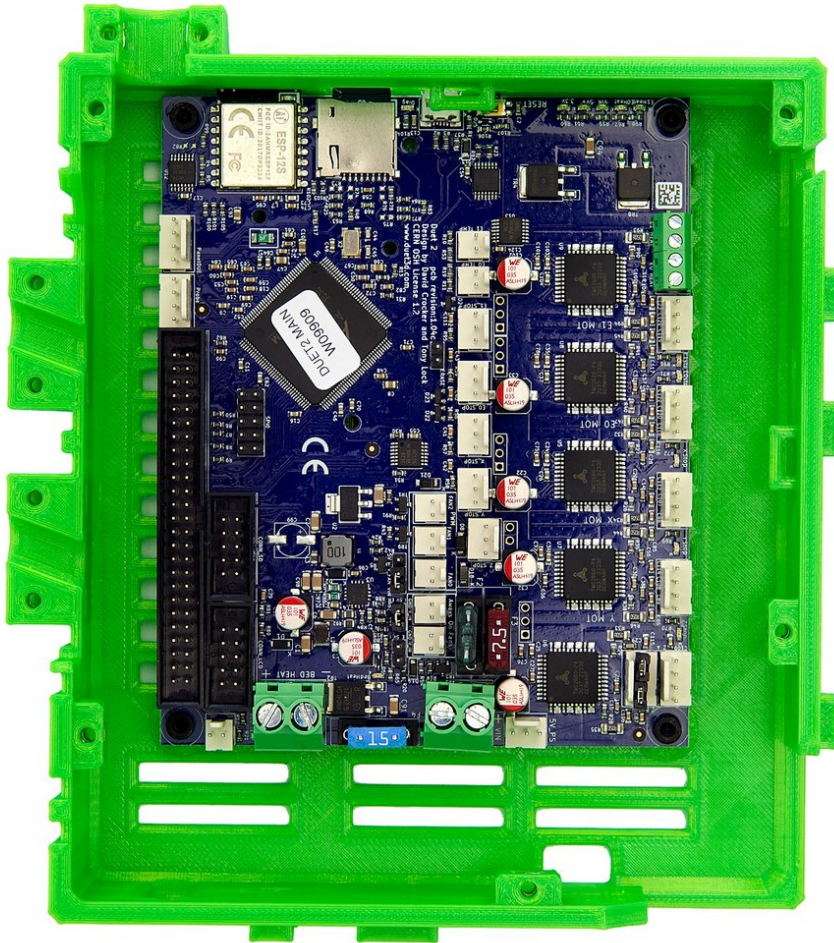


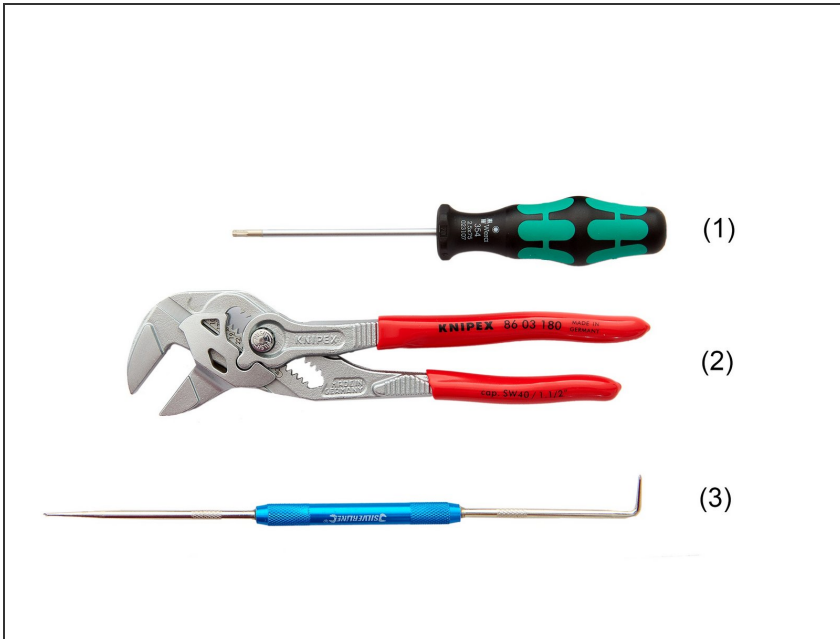
caribou3d

06. Assembly of the Duet Box

Written By: Caribou3d

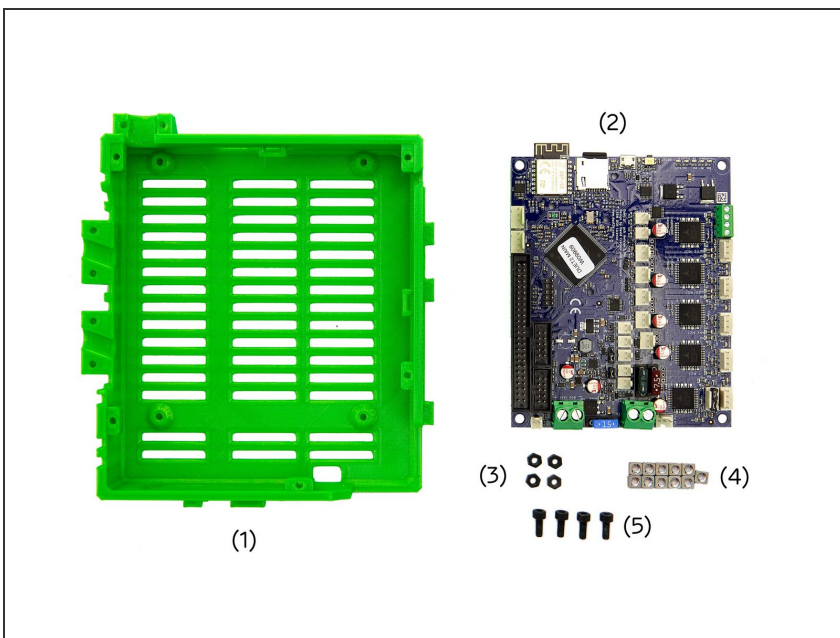


Step 1 — Required Tools



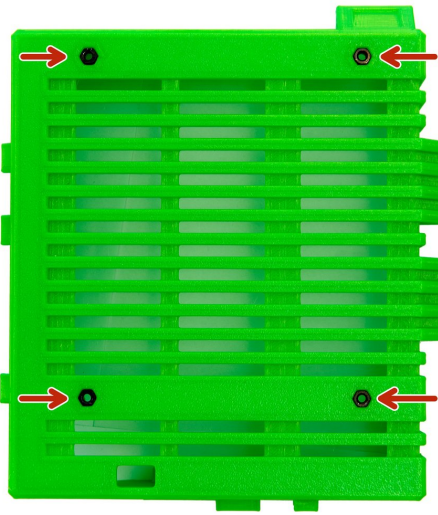
- (1) [2.0x75mm Hexagonal Screwdriver](#)
- (2) [Pliers Wrench](#)
- (3) [Engineer Scriber](#)

Step 2 — Required Parts and Screws



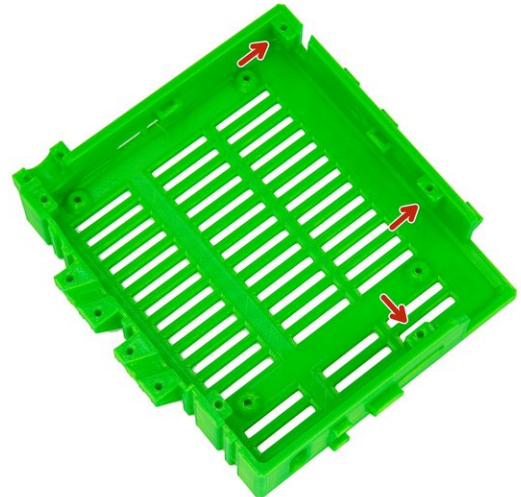
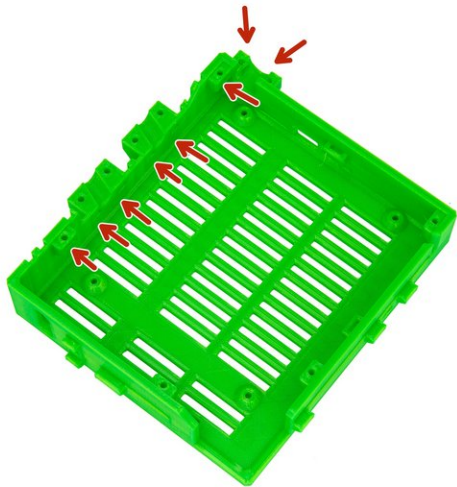
- (1) Duet Box
- (2) [Duet 2 Wifi / Ethernet](#)
- (3) **4x** [M3 Nuts](#)
- (4) **11x** [M3 Square Nuts](#)
- (5) **4x** [M3x8mm Hexagon Socket Head Cap Screw](#)

Step 3 — Inserting the nuts for the Duet Board



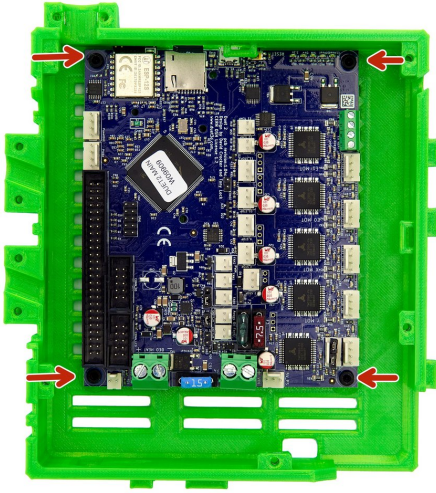
- Insert **4x M3 hex nuts** (e.g. using a screwdriver or an engineer scribe) into the back of the Einsy Box.

Step 4 — Inserting the Nuts for Cover and Cable Holder



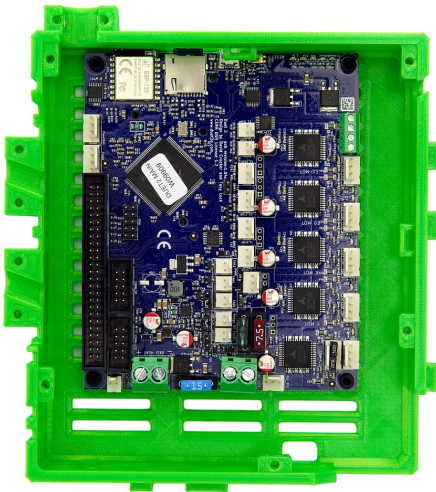
- Slide **11x M3 square nuts** into the slots provided on the inside of the Duet Box.
 - ❗ Here, we recommend using a pliers wrench to better insert the square nuts. Also make sure that the nuts match the holes exactly.

Step 5 — Installation of the Duet Board



- Finally, the Duet Board is attached to the Duet Box using **4x M3x8mm Hexagon Socket Head Cap Screw**.

Step 6



- ① The assembly of the Duet Box is complete.
- ① Proceed to instruction 07. Building the power supply if you have an unassembled power supply.
- ① If your power supply is already assembled, proceed to Instruction 08. Installing the Duet Box and Power Supply.