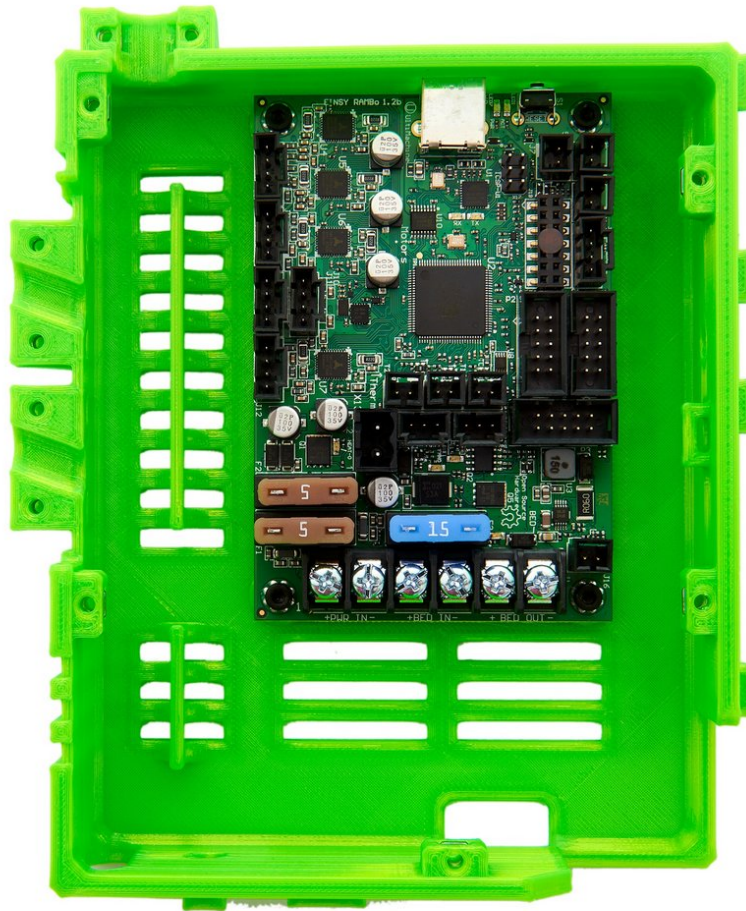


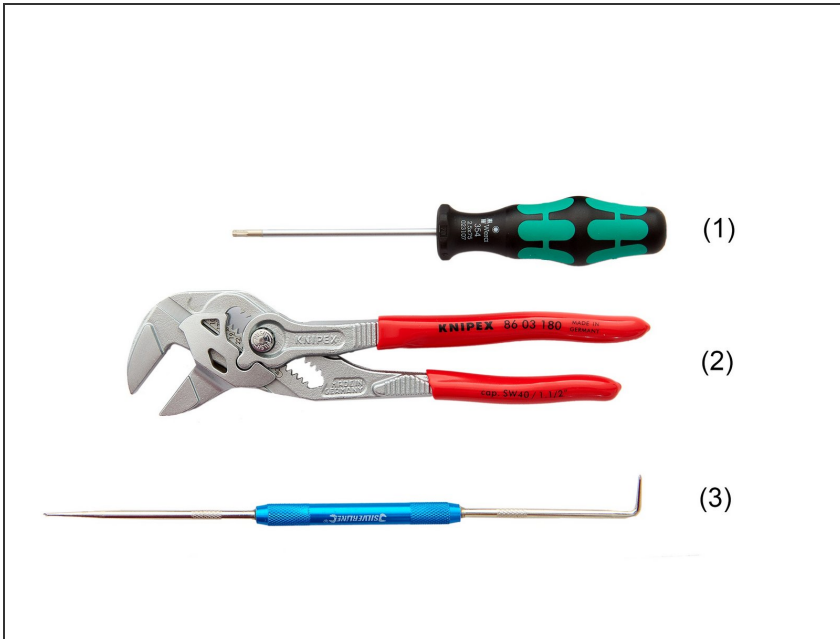
# caribou3d

## 06. Assembly of the Einsy Box

Written By: Katja Aller

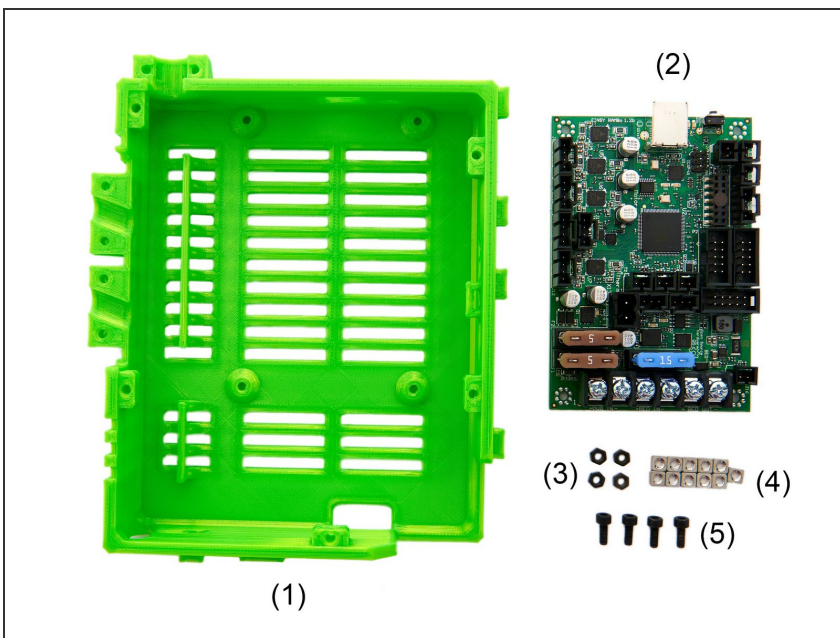


## Step 1 — Required Tools



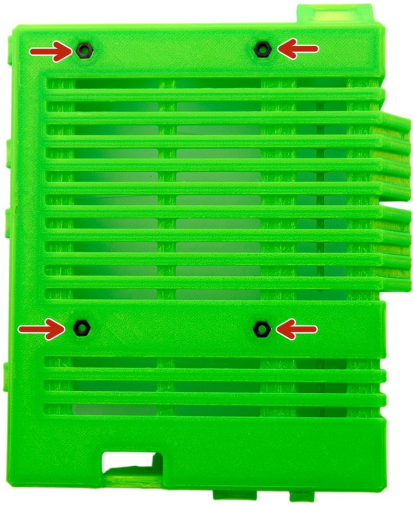
- (1) [2.5x75mm Hexagonal Screwdriver](#)
- (2) [Pliers Wrench](#)
- (3) [Engineer Scriber](#)

## Step 2 — Assembling the Parts and Screws



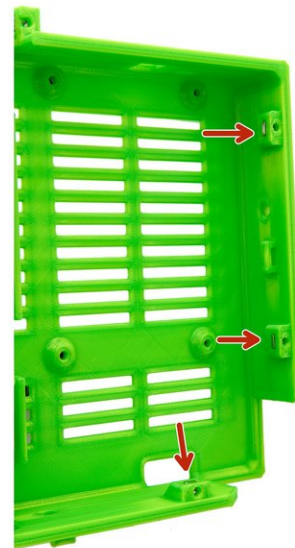
- (1) Einsy Box
- (2) [Einsy Rambo](#)
- (3) 4x [M3 Nuts](#)
- (4) 11x [M3 Square Nuts](#)
- (5) 4x [M3x8mm Hexagon Socket Head Cap Screws](#)

### Step 3 — Inserting the Nuts for the Einsy Rambo



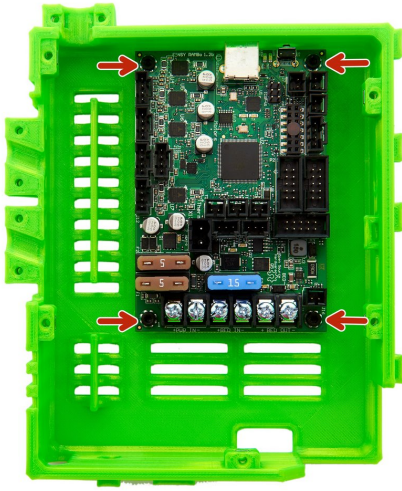
- Insert **4x M3 Hexagonal Nuts** (e.g. using a screwdriver or an engineer scribe) into the back of the Einsy Box.

### Step 4 — Inserting the Nuts for Cover and Cable Holder



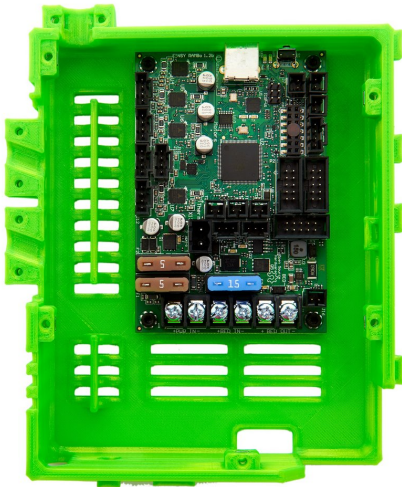
- Slide **11x M3 Square Nuts** into the slots provided on the inside of the Einsy Box.
  - ❗ Here, we recommend using a pliers wrench to make the insertion of the square nuts easier. Also make sure that the nuts match the holes exactly.

## Step 5 — Installation of the Einsy Board



- Finally, the Einsy Rambo is attached to the Einsy box using **4x M3x8mm Hexagonal Socket Head Cap Screws**.

## Step 6



- ① The assembly of the Einsy Box is now complete.
- ① Continue with instructions [07. Assembly of the PSU](#) if you have an unassembled power supply.
- ① If your power supply is already assembled, continue with instructions [08. Installation of the Einsy Box and the PSU](#).