

# caribou3d

## 07. Assembly of the PSU

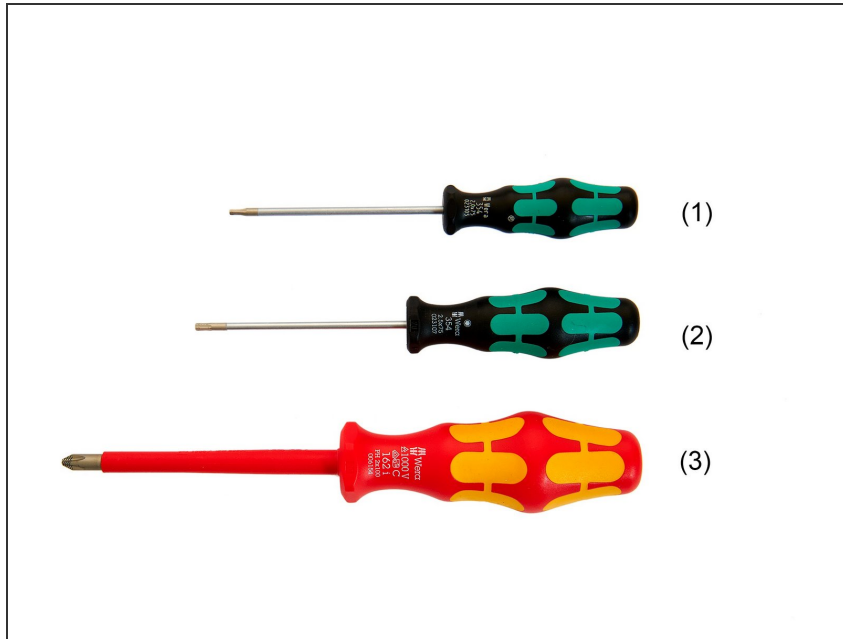
Written By: Katja Aller



## INTRODUCTION

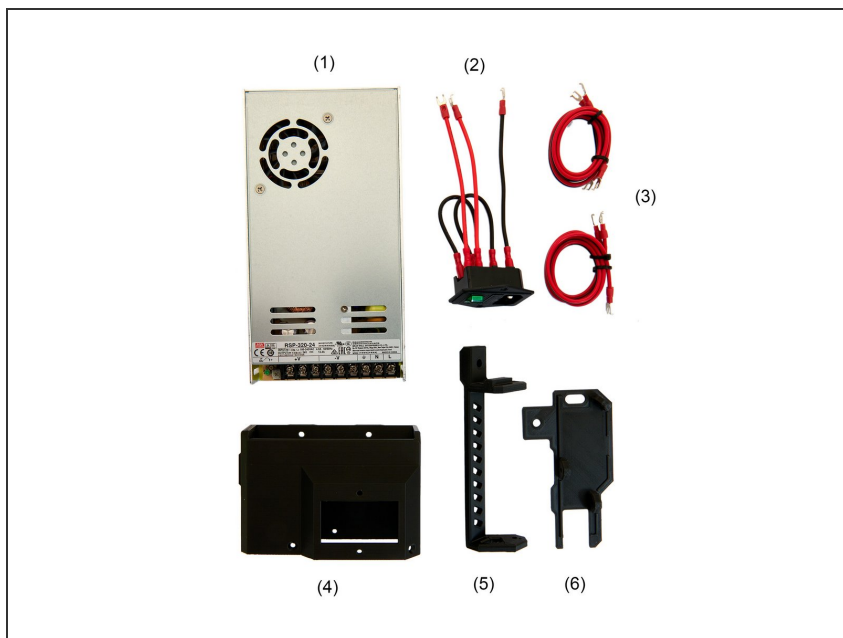
Continue with this instruction 07. Building a power supply if you have an unassembled power supply. If your power supply is already assembled, continue with instruction [08. Installation of the Einsy Box and the PSU](#).

## Step 1 — Required Tools



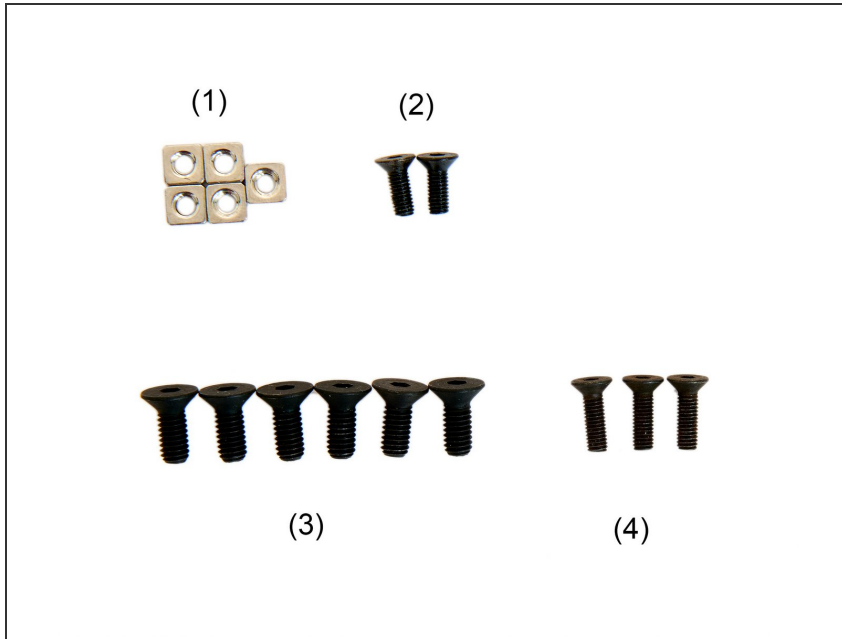
- (1) [2.0x75mm Hexagonal Screwdriver](#)
- (2) [2.5x75mm Hexagonal Screwdriver](#)
- (3) [PH2x100mm Insulated Screwdriver for Phillips Screws](#)

## Step 2 — Assembling the Parts



- (1) [Meanwell PSU](#)
- (2) [PSU Switch](#)
- (3) [PSU Cables](#)
- (4) Meanwell PSU Cover
- (5) Meanwell Top Mount
- (6) PSU Cover Bottom

### Step 3 — Assembling the Screws



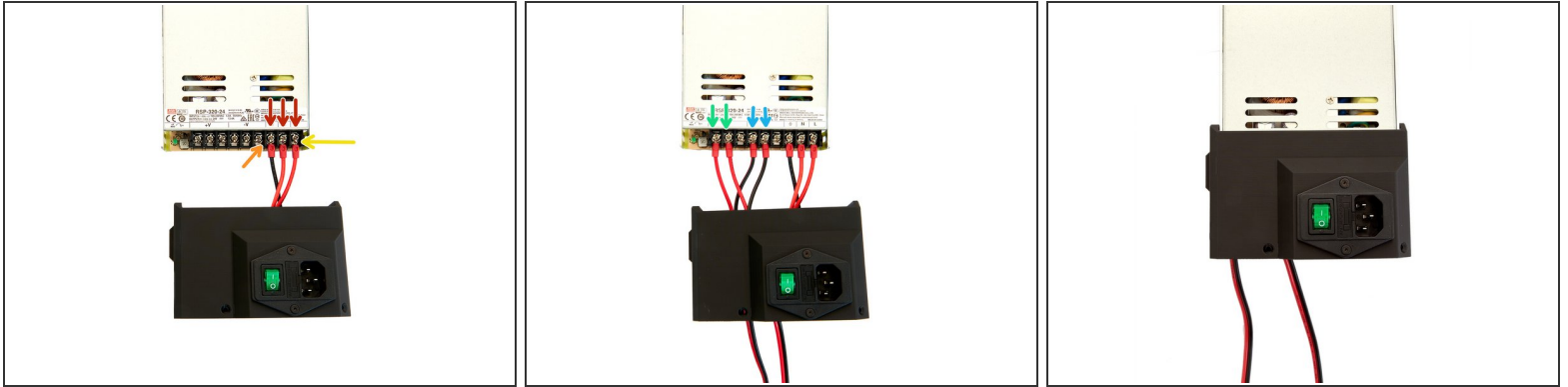
- (1) **5x** [M3 Square Nuts](#)
- (2) **2x** [M3x8mm Hex Drive Flat Head Screw](#)
- (3) **3x** [M3x10mm Hex Drive Flat Head Screw](#)
- (4) **6x** [M4x10mm Hex Drive Flat Head Screw](#)

### Step 4 — Installing the PSU Switch



- Insert **2x M3 Square Nuts** into the designated holders on the inside of the Meanwell case.
  - From the outside, push the cables of the PSU switch into the Meanwell cover.
- ⚠ Pay attention to the orientation of the switch in the pictures.
- Use **2x M3x8mm Flat Head-Head Socket Cap Screws** to fix the PSU switch.

## Step 5 — Wiring the Meanwell



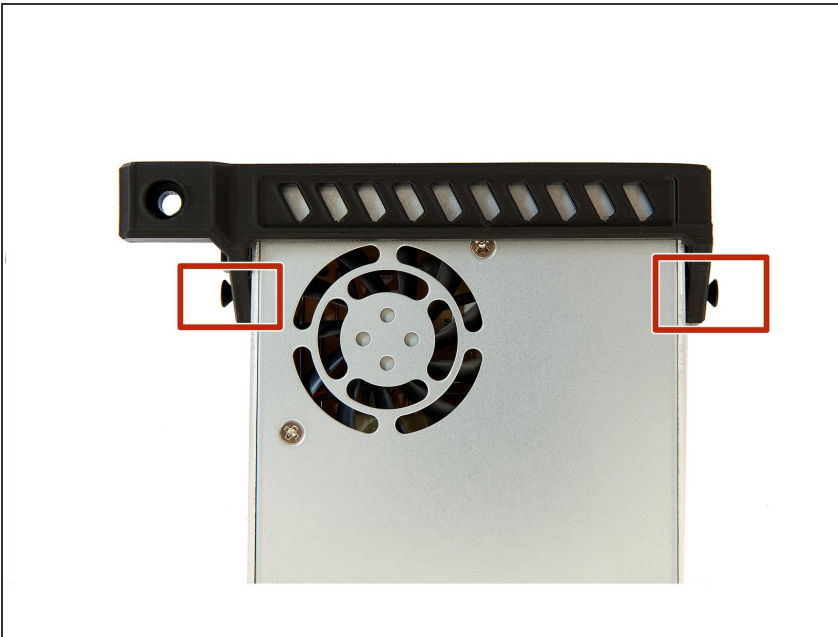
- Loosen the first three screws from right to left (L, N and ground).
  - Attach the black cable to ground...
  - and the two red cables to L and N (the order of the red cables is irrelevant).
  - Loosen two screws each at +V and -V.
  - Attach the two red power supply cables to +V...
  - and the two black ones to -V.
- ⚠ It is important that you wire the Meanwell correctly, otherwise a short circuit may occur.
- Push the PSU and the Meanwell cover together.

## Step 6 — Screwing the Meanwell PSU Together (1 / 2)



- With **4x M4x12mm Flat Head-Head Socket Cap Screws** the Meanwell cover is screwed to the Meanwell PSU at the sides ( figures 1,2) and the back (figure 3).

## Step 7 — Screwing the Meanwell PSU Together (2 / 2)



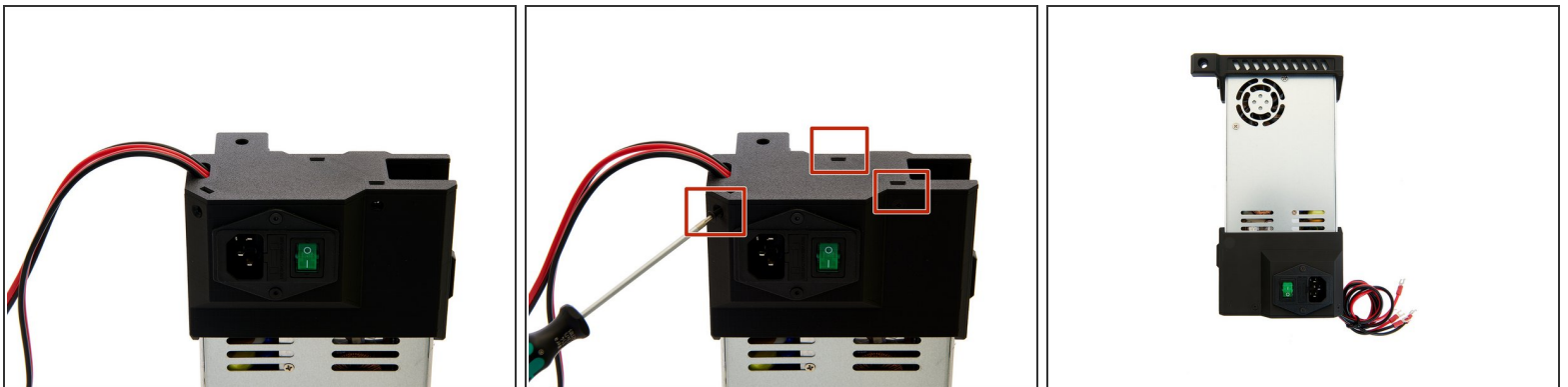
- **2x M4x10mm Flat Head-Head Socket Cap Screws** are used to attach the Meanwell Top Mount to the top of the PSU.

## Step 8 — Preparing the PSU Cover Bottom



- Insert **3x M3 Square Nuts** into the Meanwell cover bottom.
- Push the square nuts (e.g. with a flathead screwdriver), to the bottom of the slots.
- Push the cables through the opening in the bottom of the Meanwell cover.



## Step 9 — Fastening the PSU Cover Bottom



- Place the PSU cover bottom on the PSU cover.
- Use **3x M3x10mm Flat Head-Head Socket Cap Screws** to screw the PSU cover bottom to the PSU cover.

## Step 10



-  The PSU is now completely assembled.
-  Continue with instructions [08. Installation of the Einsy Box and the PSU.](#)