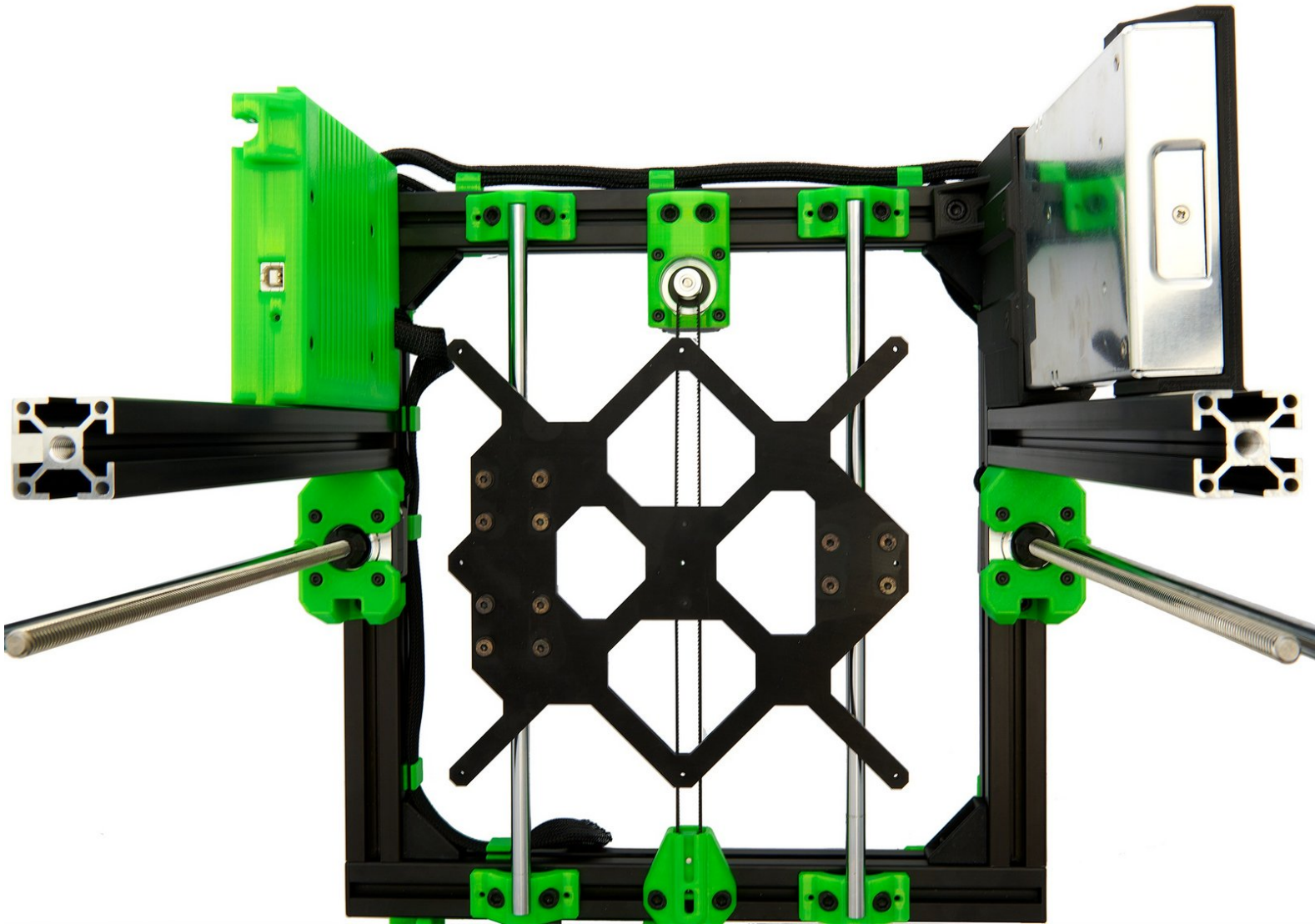


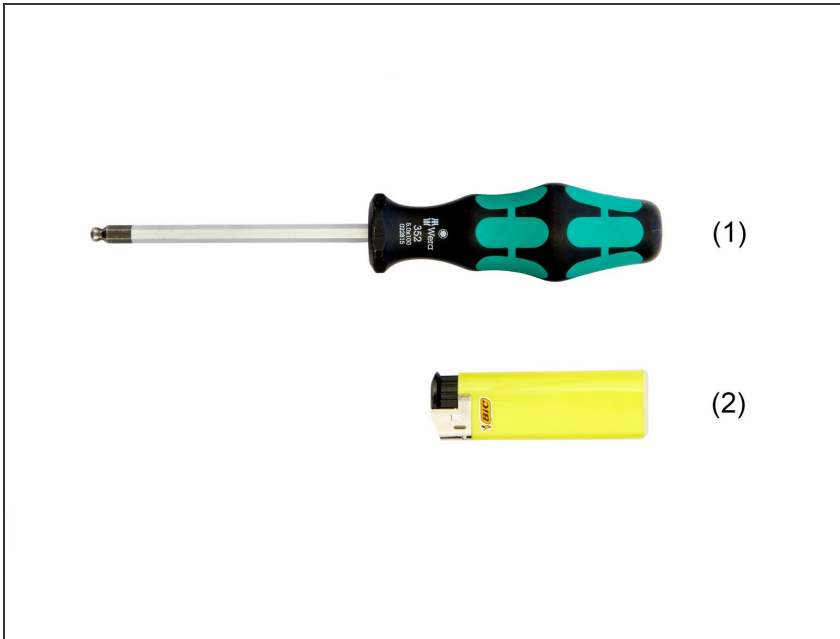
# caribou3d

## 08. Installation of the Einsy Box and the PSU

Written By: Katja Aller

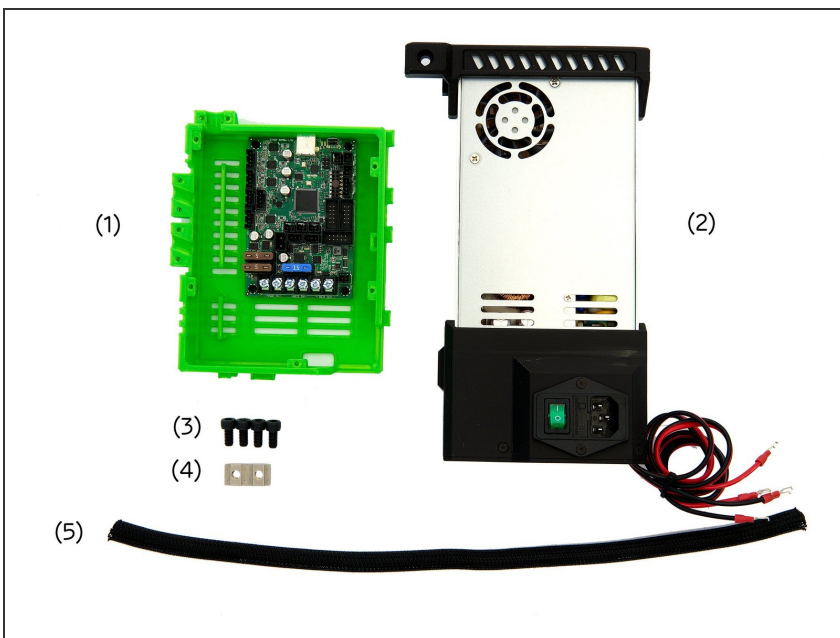


## Step 1 — Required Tools



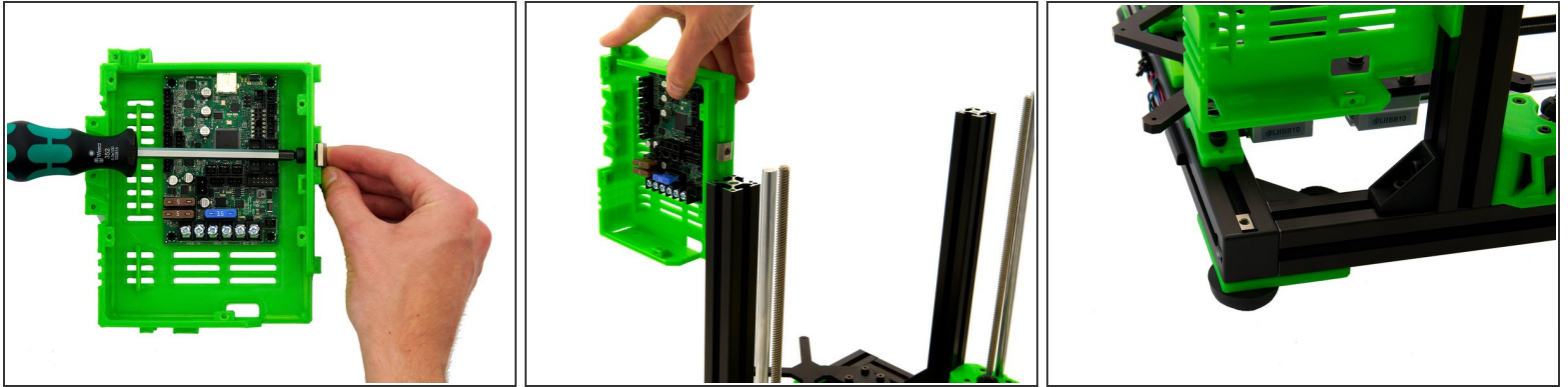
- (1) [5.0x100mm Hexagon Ballpoint Screwdriver](#)
- (2) Lighter

## Step 2 — Assembling the Parts and Screws



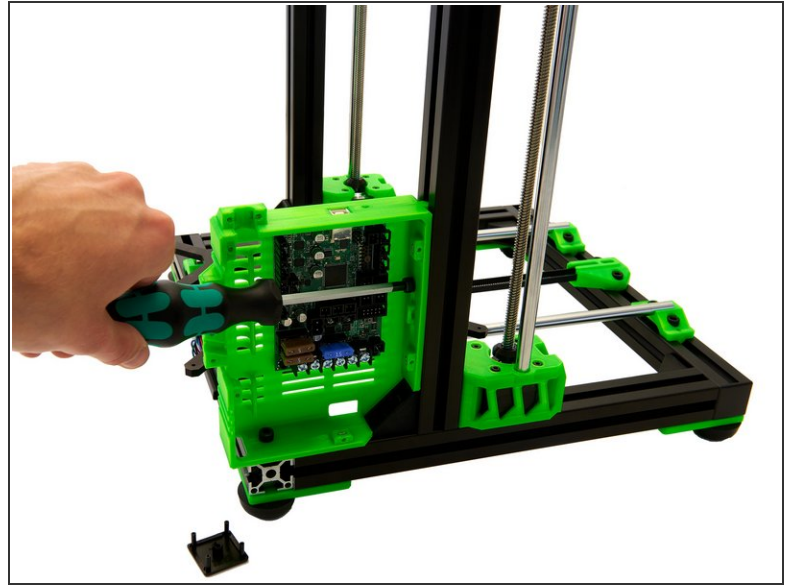
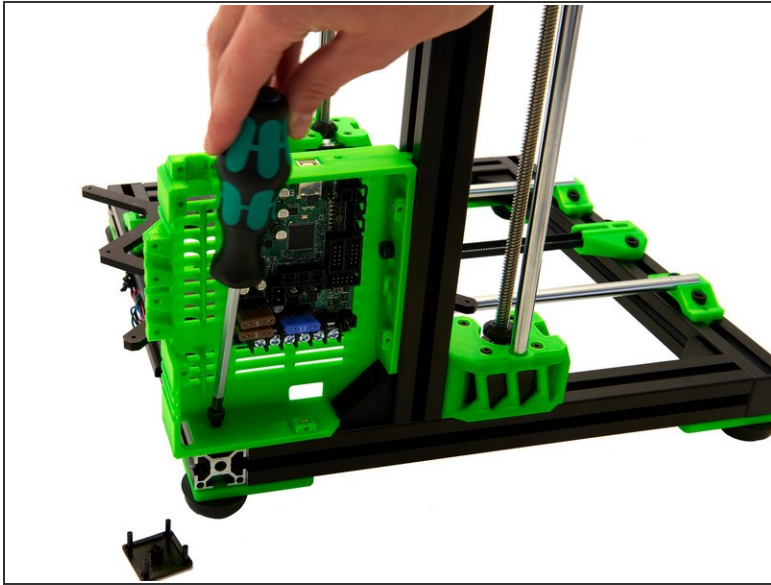
- (1) Assembled Einsy Box (see manual [06.](#))
- (2) Assembled PSU (see manual [07.](#))
- (3) **4x** [M6x12mm Hexagonal Socket Head Cap Screws](#)
- (4) **2x** [T-Nuts](#)
- (5) [42cm Techflex Cable Tube \(Diameter 6.4mm\)](#)

### Step 3 — Installing the Einsy Box (1 / 2)



- A **M6x12mm Hexagonal Socket Head Cap Screw** is inserted through the Einsy Box and *loosely* fastened from the outside with a **T-Nut**.
- Attach the Einsy Box to the left side of the printer, using the T-Nut that was just attached. The T-Nut is pushed into the rear slot of the left z-extrusion.

## Step 4 — Installing the Einsy Box (2 / 2)



- Align the remaining **T-Nut** inside the rear x-extrusion with the hole on the bottom of the Einsy Box. Into this hole, you place another **M6x12mm Hexagon Socket Head Cap Screw** and tighten it.
- ⓘ To do this, it may be helpful to remove the end cap. Remember to put the end cap back into place after tightening the screws.
- When the Einsy Box rests level on the frame, the **M6x12mm Hexagonal Socket Head Cap Screw** can be tightened on the z-extrusion.

## Step 5 — Attaching the Techflex Cable Tube



- First, shorten the Techflex tube to a length of 42cm. Both ends of the tube must be briefly heated with a lighter.
- Now push the PSU cables through the Techflex tube. Push the tube about 1cm into the power supply.

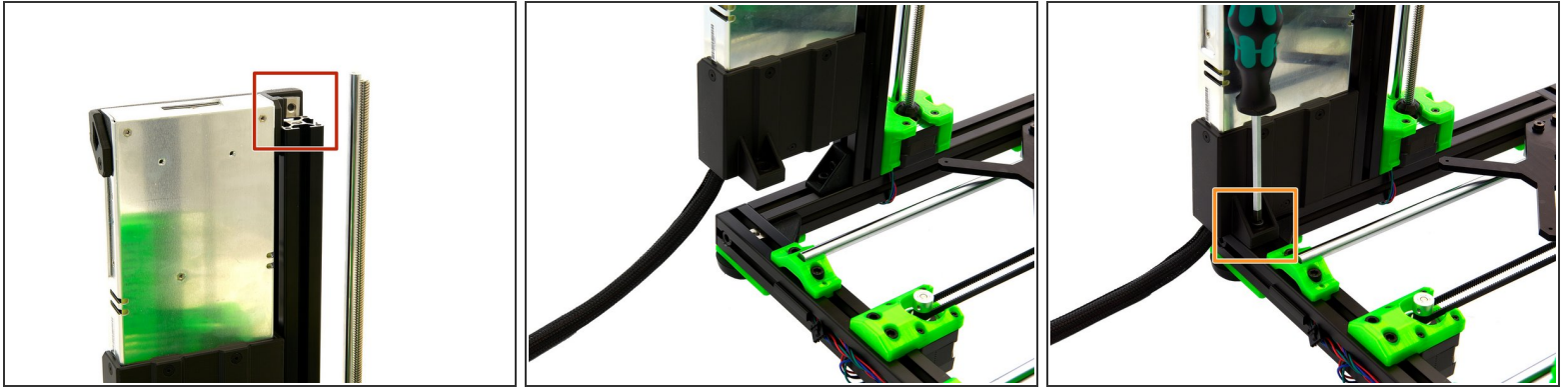
## Step 6 — Preparing the PSU



- A **M6x12mm cylinder head screw** is inserted through the hole in the bracket.
- From the outside, a T-nut is *loosely* attached.

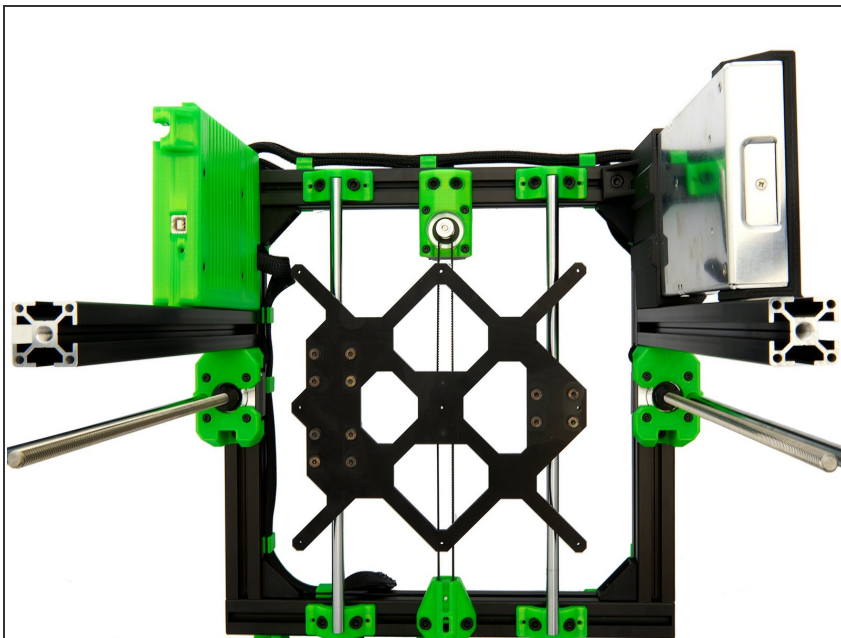


## Step 7 — Installing the PSU



- The power supply unit is attached to the right side of the printer using the T-Nut that was just attached. The T-Nut is then pushed into the right slot of the right z-extrusion.
- When the PSU is resting level on the frame, the **M6x12mm Hexagonal Socket Head Cap Screw** on the Meanwell Top Mount can be tightened.
- Align the remaining T-Nut in the rear x-extrusion with the hole on the bottom of the power supply. Place an **M6x12mm Hexagonal Socket Head Cap Screw** into this hole. Then tighten the screw.

## Step 8



- ❗ The Einsy Box and the PSU are now fully installed.
- ❗ Continue with instructions [09. Assembly and Installation of the Display](#).