

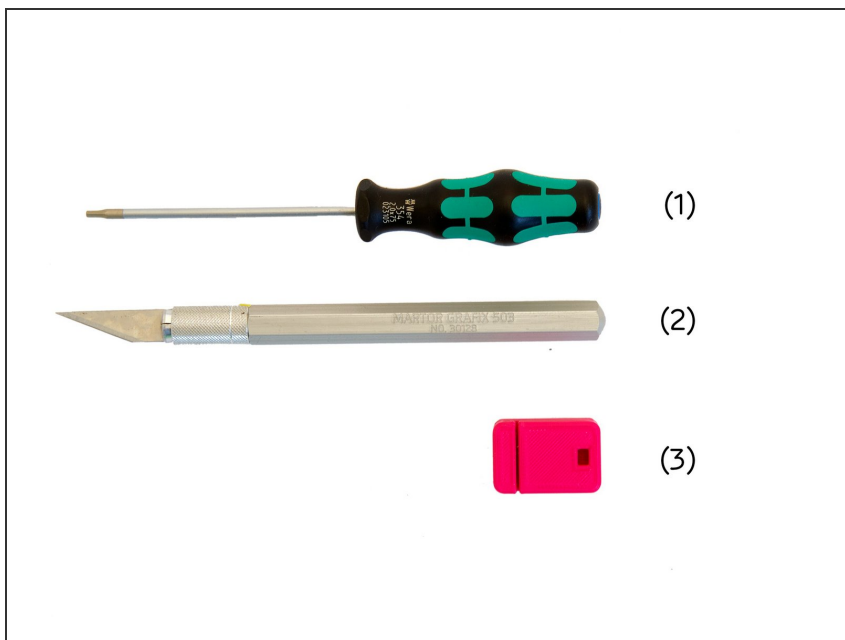
caribou3d

14. Assembly of the Slice Engineering Hotend

Written By: Caribou3d

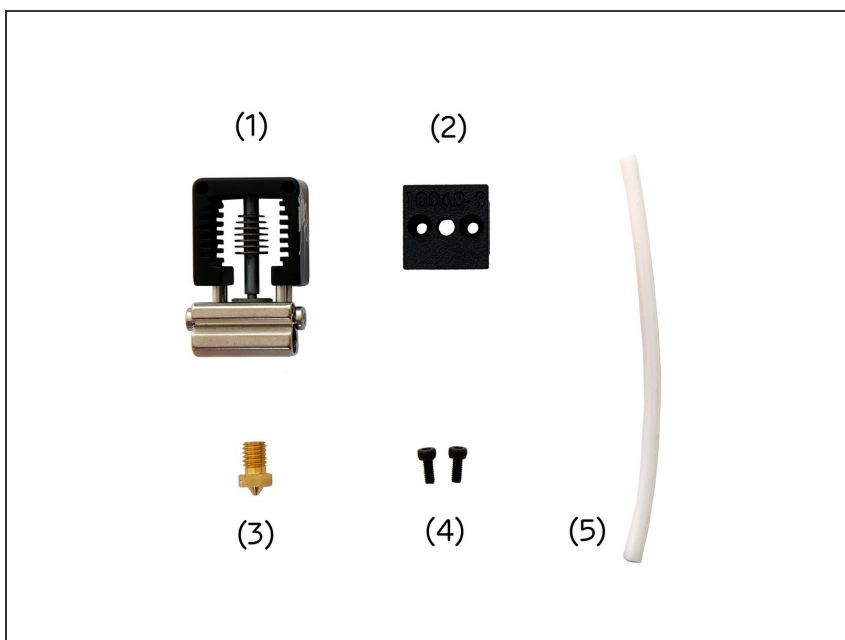


Step 1 — Required Tools



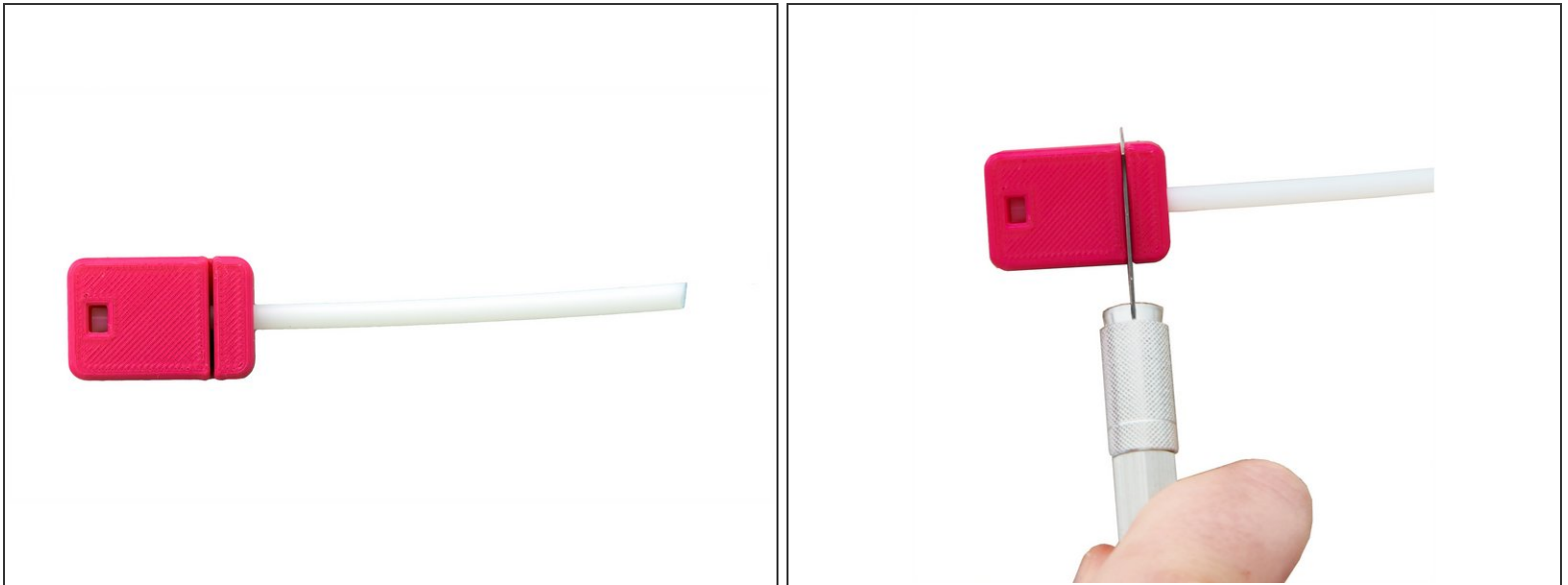
- (1) [2.0x75mm Hexagonal Screwdriver](#)
- (2) Scalpel
- (3) Cutting Tool for PTFE tube

Step 2 — Assembling the Parts



- (1) Slice Engineering Hotend
 - [Mosquito Hotend](#)
 - [Mosquito Magnum Hotend](#)
- (2) Mosquito Mount
- (3) [Nozzle](#)
- (4) **2x** M2x6mm Hexagon Socket Head Cap Screws
- (5) [PTFE Tube](#)

Step 3 — Preparing the PTFE Tube



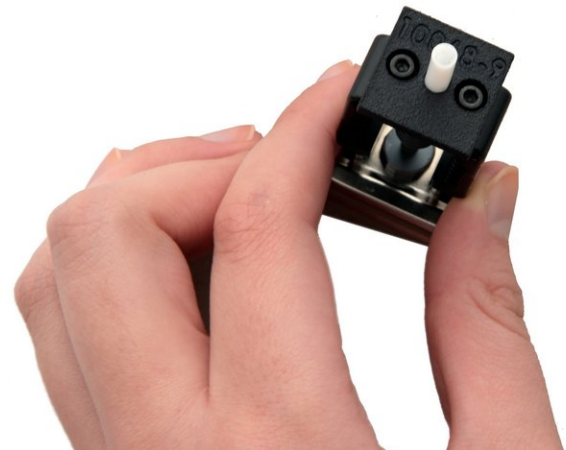
- Push the PTFE tube completely into the cutting tool.
- ⓘ You can check whether the PTFE tube is seated correctly in the viewing window in the cutting tool.
- ⚠ Make sure that the end of the PTFE tube that is visible in the viewing window is straight.
- Cut the PTFE tube in the provided slot.
- Using the scalpel, one side of the tube must be beveled in a funnel shape.
- ⚠ There must be no residues of the material in the PTFE tube.

Step 4 — Installing the Hotend Mount (1 / 2)



- Push the PTFE tube through the opening in the Mosquito mount.
- Align it so that the end of the PTFE tube with the funnel-shaped opening is above the side of the Mosquito mount with the lettering.
- Place the Mosquito mount on the hotend so that the lettering is on top.



Step 5 — Installing the Hotend Mount (2 / 2)



- Push the PTFE tube through as far as possible.
- Secure the Mosquito mount on the hotend with **2x M2x6mm Hexagon Socket Head Cap Screws**.
- Finally, hand-tighten the nozzle into the hotend.

Step 6



-  The Slice Engineering Hotend is now fully assembled.
-  Continue with instructions 15.1. Assembly of the Bondtech MK3S Mosquito Extruder.